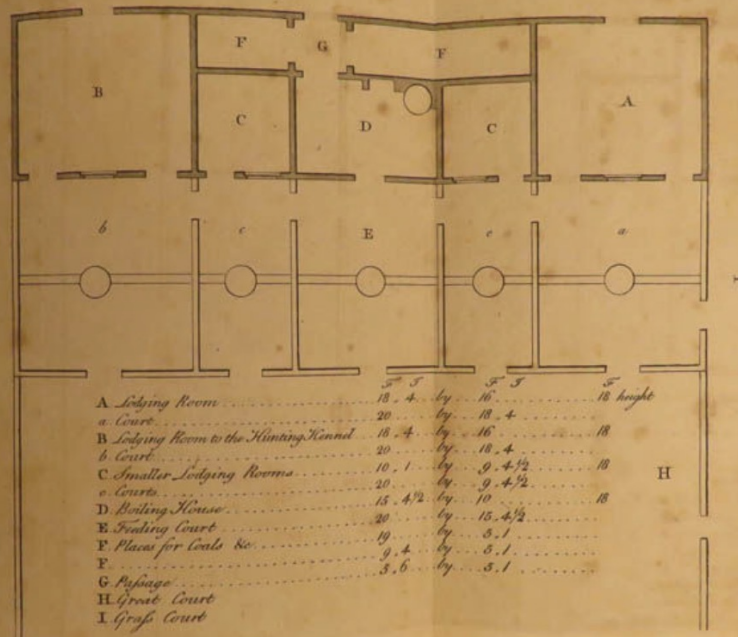


# Of Kennels, Species, and Entangled Histories

Sean Weiss, Ph.D.  
Associate Professor of Architectural History  
Chair, Architecture Department  
Bernard and Anne Spitzer School of Architecture  
City College of the City University of New York

The Kennel at Stepleton House, Iwerne Stepleton, Dorset, c. 1769  
 Patron: Peter Beckford



ce of his  
 uments?  
 he gen-  
 ar hum-  
 follow-

Hon.

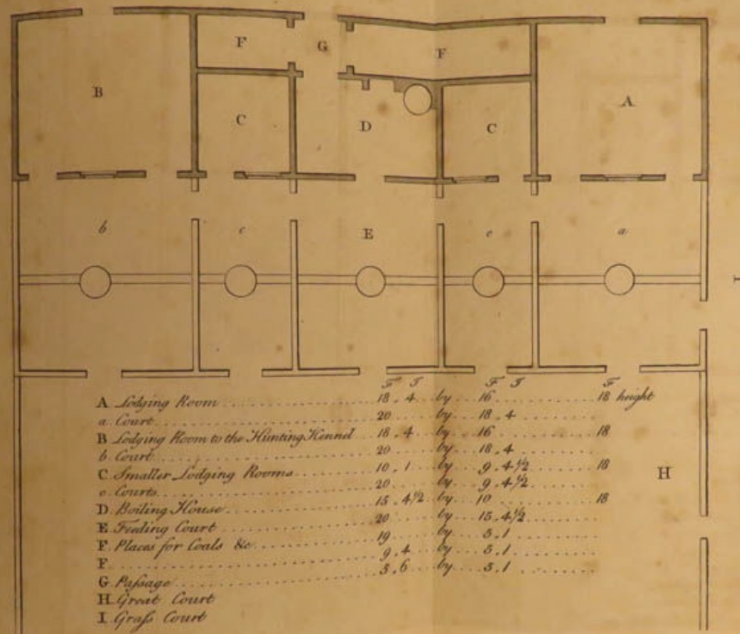
g letters,  
 too local

now use  
 Goulard,  
 treatise,



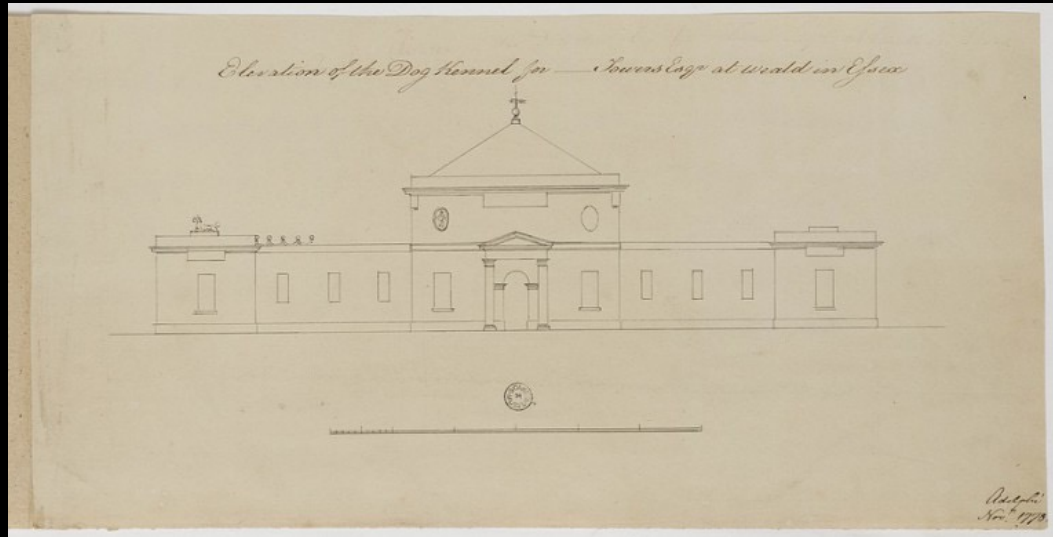
John Wootton, *The Meet of a Hunt with Henry Hoare II*, 1729

The Kennel at Stepleton House, Iwerne Stepleton, Dorset, c. 1769  
 Patron: Peter Beckford

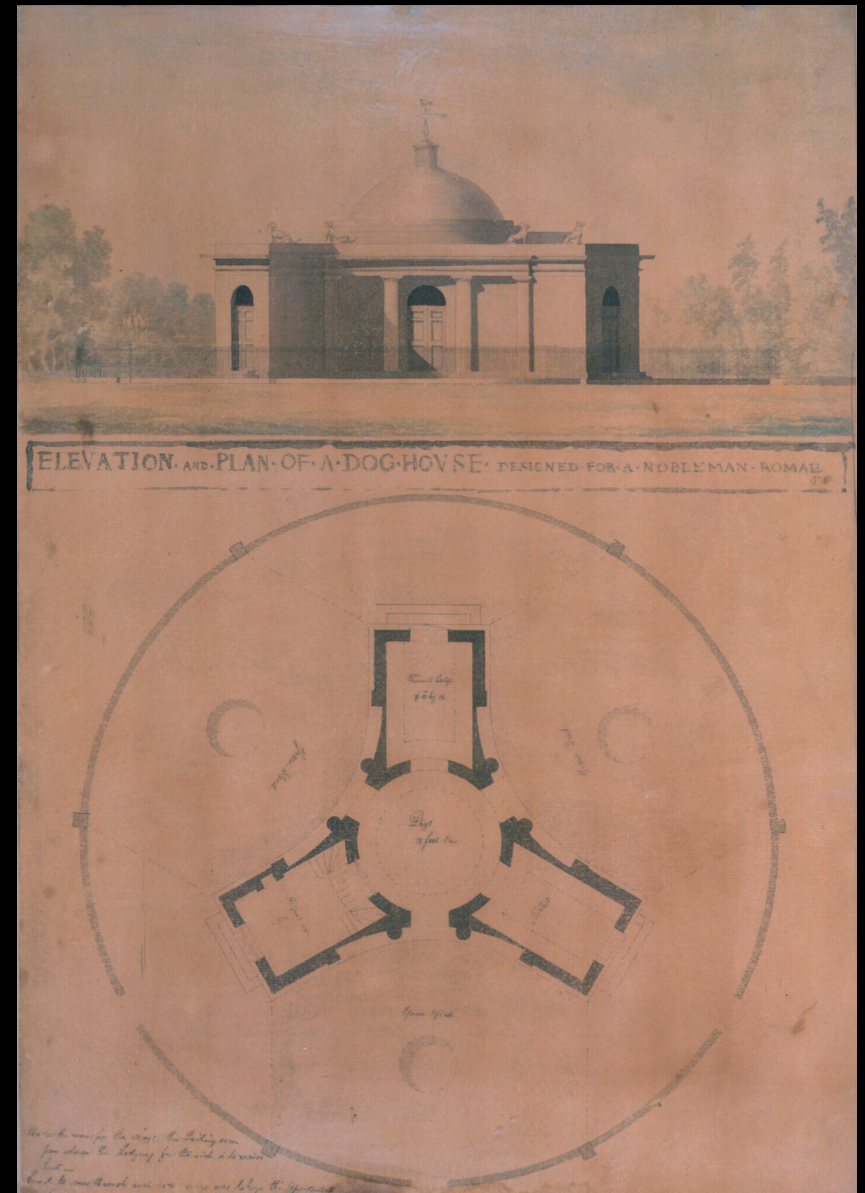


A. Lodging Room	13. 4.	by	16. 5.	18 height
a. Court	20.	by	18. 4.	
B. Lodging Room to the Hunting Kennel	18. 4.	by	16.	18
b. Court	20.	by	18. 4.	
C. Smaller Lodging Rooms	10. 1.	by	9. 4. 1/2	18
c. Courts	20.	by	9. 4. 1/2	
D. Boiling House	15. 4. 1/2	by	10.	18
E. Feeding Court	20.	by	15. 4. 1/2	
F. Places for Coals &c.	19.	by	5. 1.	
F.	9. 4.	by	5. 1.	
G. Passage	5. 6.	by	5. 1.	
H. Great Court				
I. Grass Court				

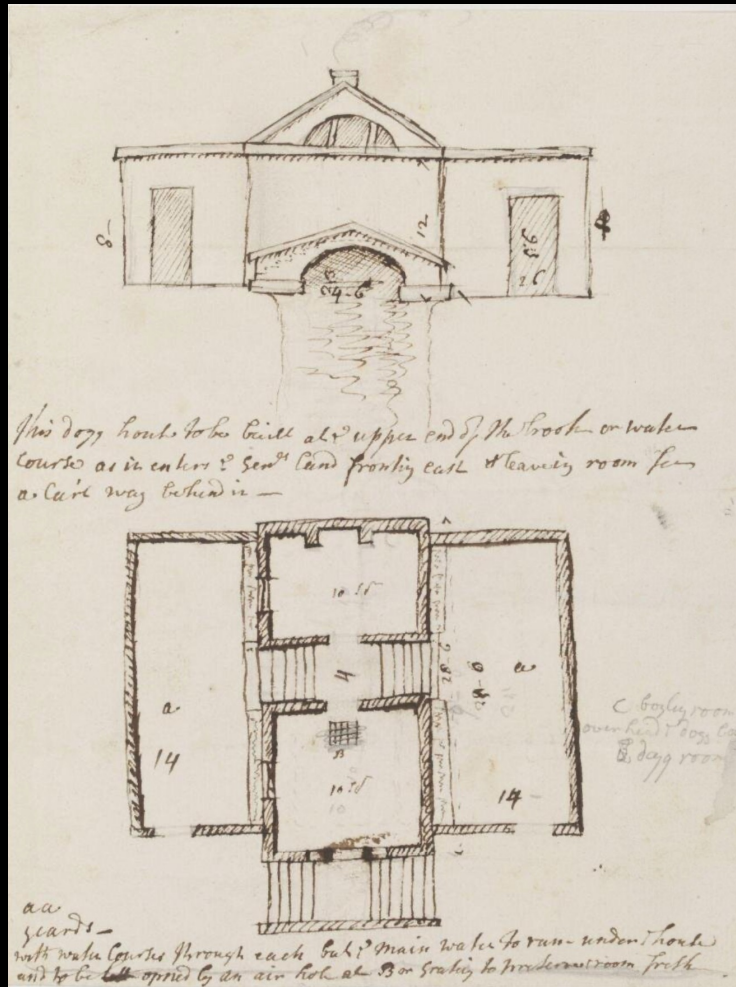
Robert and James Adams, Design for a Kennel at Weald Hall, Brentwood, Essex, for Christopher Tower, 1778. Sir John Soane's Museum.



Sir John Soane, Elevation and Plan of a Dog House for a Nobleman, 1770. Sir John Soane's Museum.



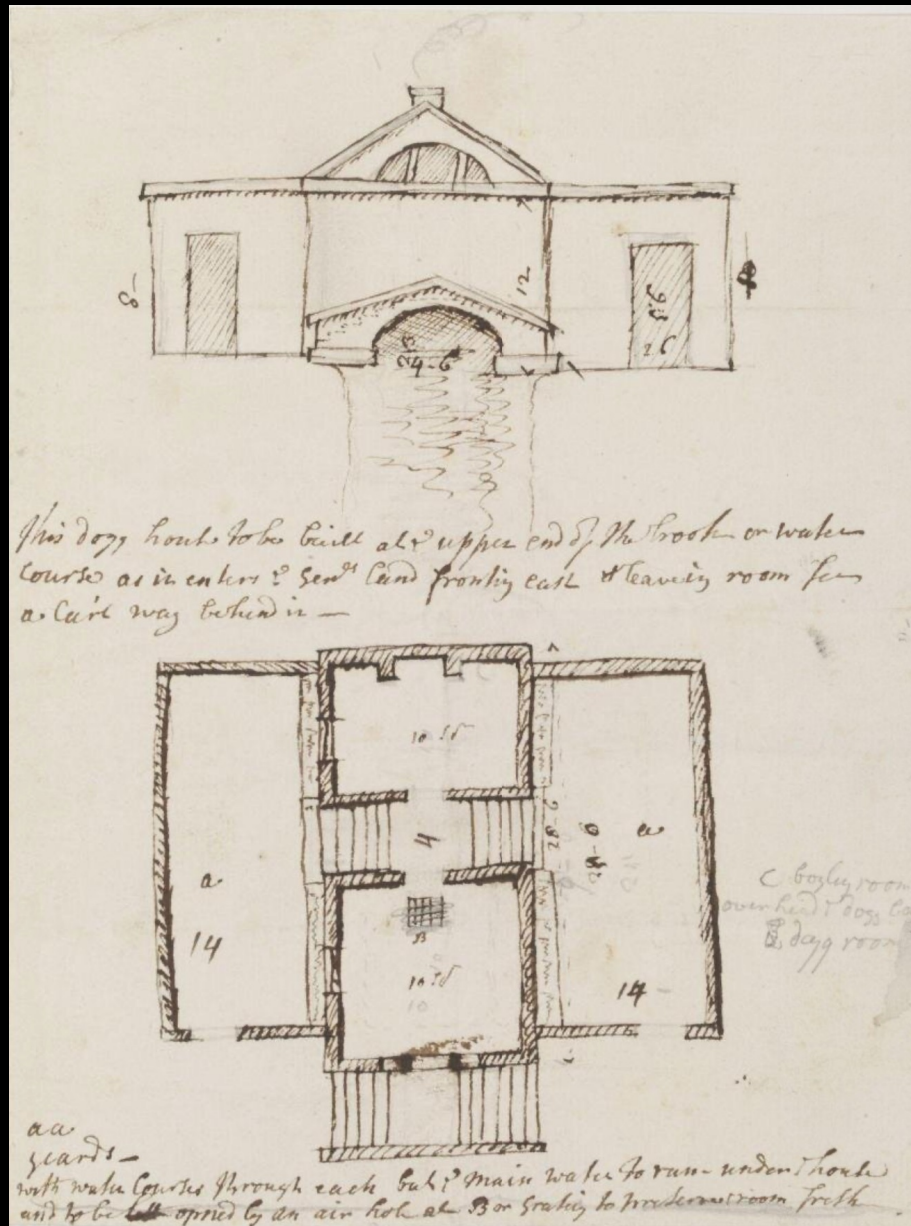
Sir Edward Lovett Pearce, Elevation and Plan of a kennel, early 18<sup>th</sup> Century (before 1733). Victoria and Albert Museum.



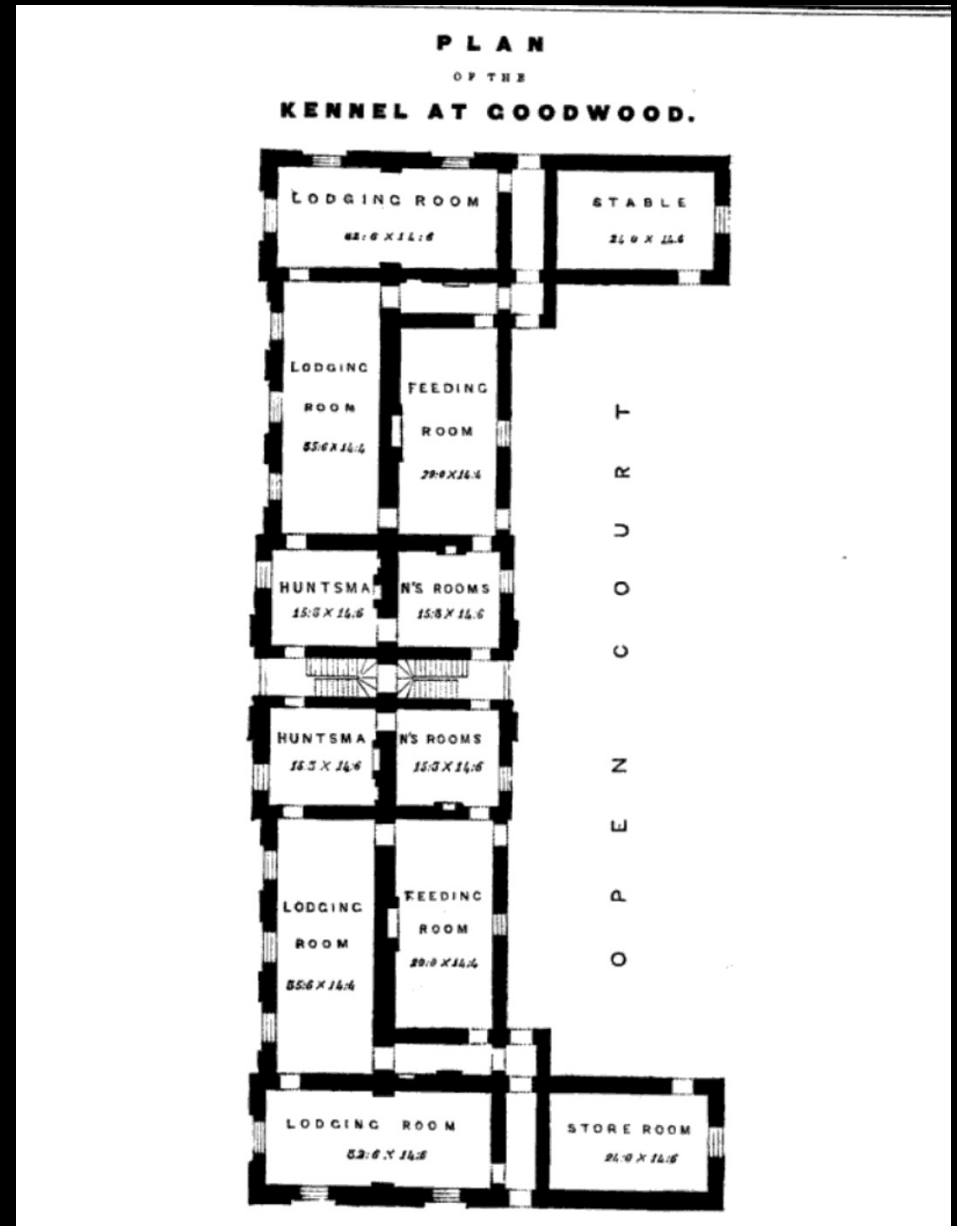
The Kennel at Goodwood, Sussex, 1787  
 Architect: James Wyatt  
 Patron: Charles, the 3<sup>rd</sup> Duke of Richmond



Sir Edward Lovett Pearce, Elevation and Plan of a kennel, early 18<sup>th</sup> Century (before 1733). Victoria and Albert Museum.



The Kennel at Goodwood, Sussex, 1787  
 Architect: James Wyatt  
 Patron: Charles, the 3<sup>rd</sup> Duke of Richmond



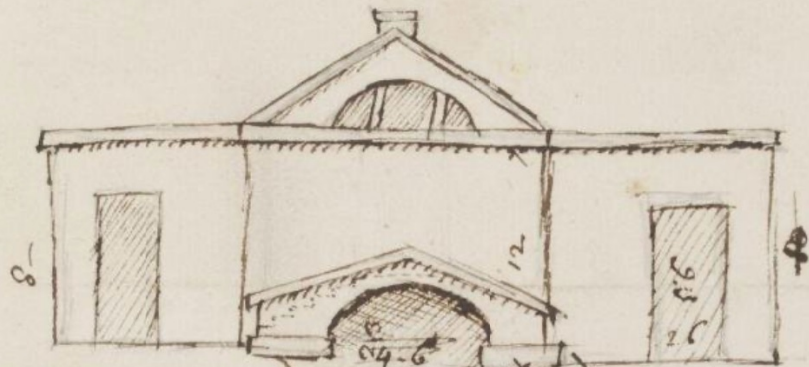
First let the Kennel be the huntsman's care,  
Upon some little eminence erect,  
And fronting to the ruddy dawn; its courts  
On either hand wide opening to receive  
The sun's all-cheering beams, when mild he shines,  
And gilds the mountain tops...

From the full cistern lead the ductile streams,  
To wash thy court well-paved, nor spare thy pains,  
For much to health will cleanliness avail...

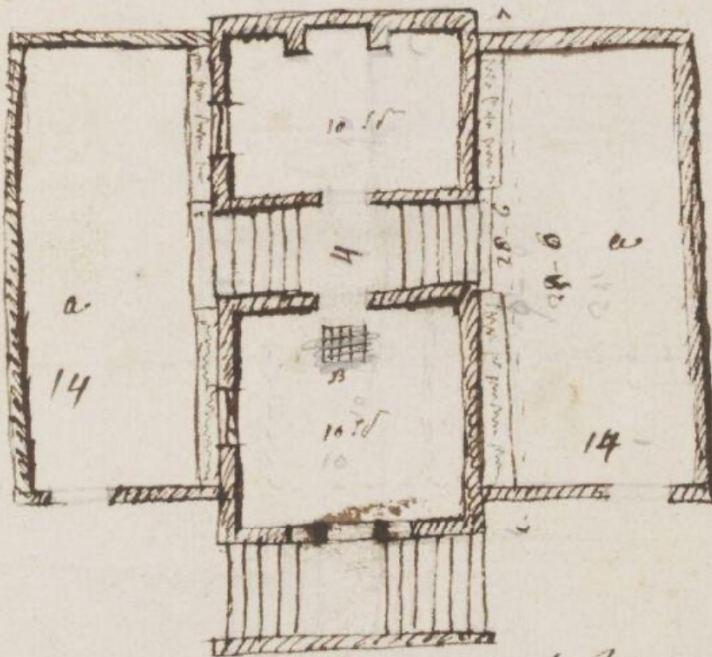
From William Somerville, "The Chase" (1735)



Sir Edward Lovett Pearce, Elevation and Plan of a kennel, early 18<sup>th</sup> Century (before 1733). Victoria and Albert Museum.



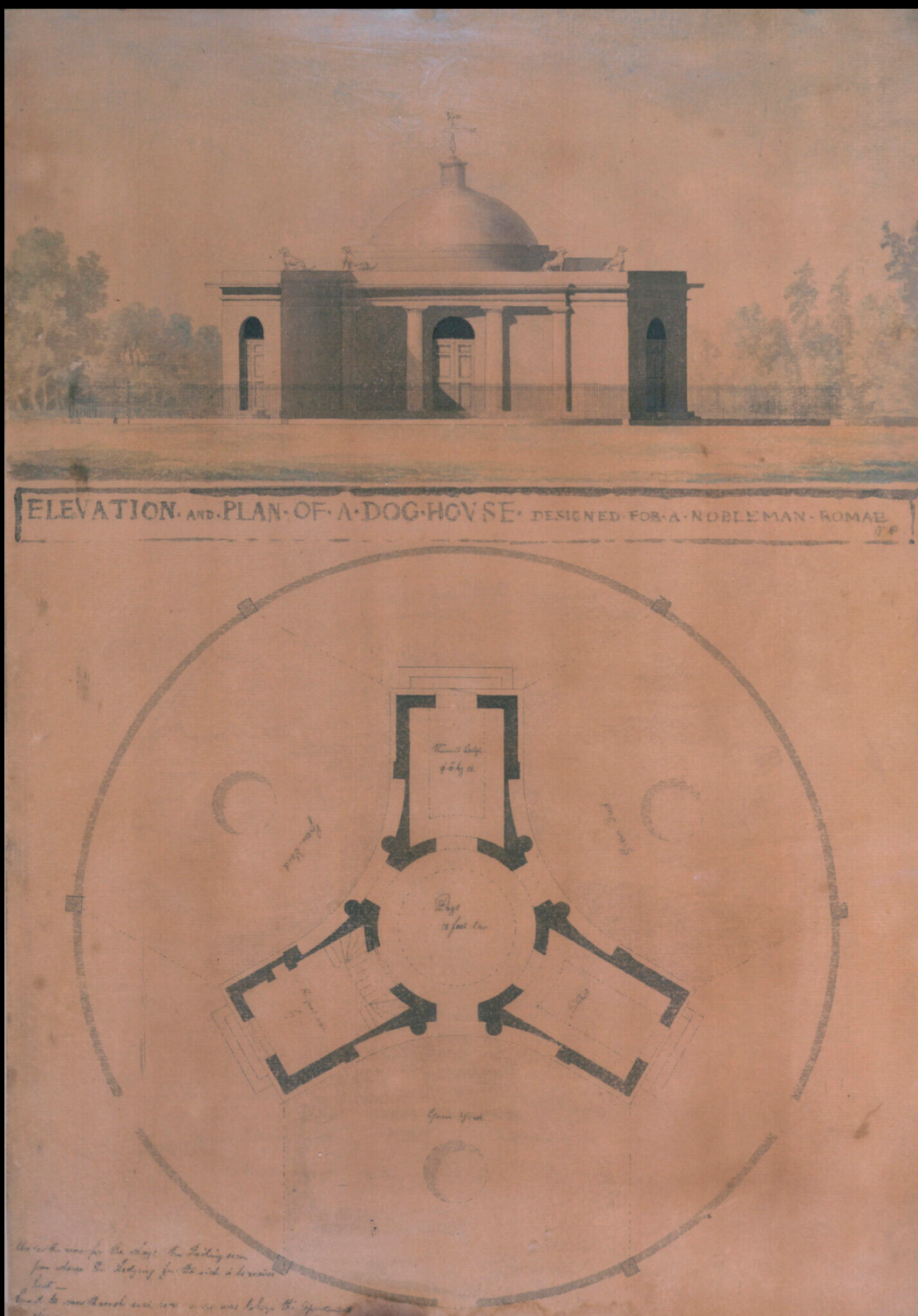
This dog house to be built at upper end of the brook or water course as in plan & sent<sup>d</sup> land fronting east & leaving room for a cart way behind it —



C boiler room  
over head dog house  
& day room

aa  
yards —  
with water courses through each part & main water to run under house  
and to be kept open by an air hole at B or scating to moderate room fresh

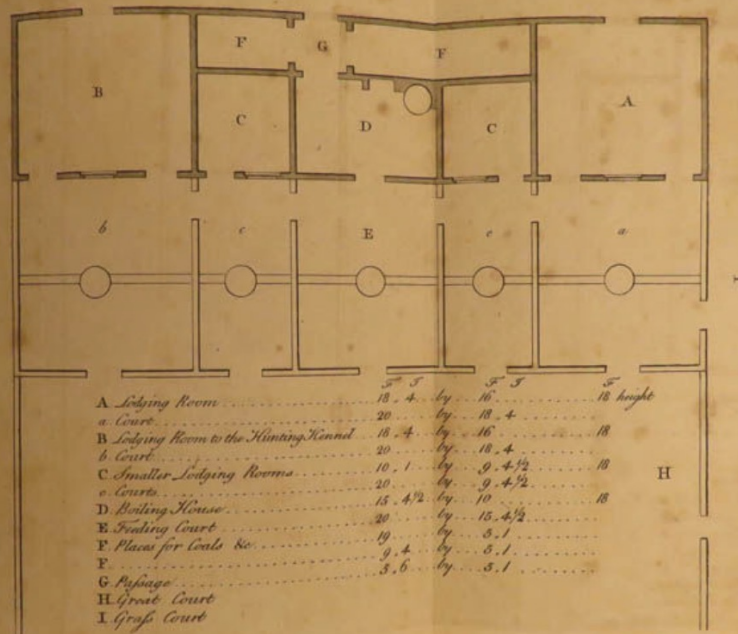
Sir John Soane, Elevation and Plan of a Dog House for a Nobleman, 1780. Sir John Soane's Museum.



Henry Thomas Alken, *The Belvoir Hunt: Full Cry*, c. 1830-40



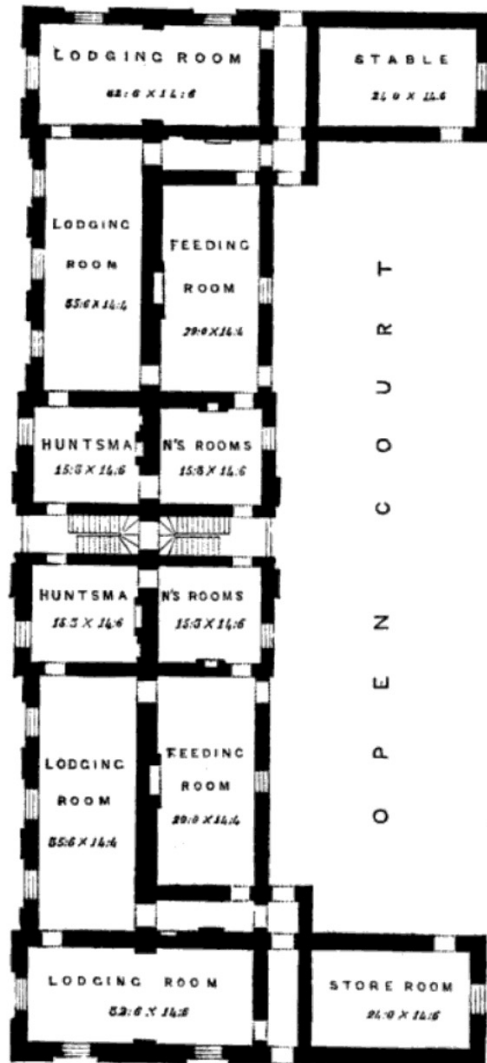
The Kennel at Stepleton House, Iwerne Stepleton, Dorset, c. 1769  
 Patron: Peter Beckford



A. Lodging Room	13. 4.	by	16. 5.	18 height
a. Court	20.	by	18. 4.	
B. Lodging Room to the Hunting Kennel	13. 4.	by	16. 5.	18
b. Court	20.	by	18. 4.	
C. Smaller Lodging Rooms	10. 1.	by	9. 4. 1/2	10
c. Courts	20.	by	9. 4. 1/2	
D. Boiling House	13. 4. 1/2	by	10.	18
E. Feeding Court	20.	by	15. 4. 1/2	
F. Places for Coals &c.	19.	by	5. 1.	
F.	9. 4.	by	5. 1.	
G. Passage	3. 6.	by	5. 1.	
H. Great Court				
I. Grass Court				

The Kennel at Goodwood, Sussex, 1787  
Architect: James Wyatt  
Patron: Charles, the 3<sup>rd</sup> Duke of Richmond

**PLAN**  
OF THE  
**KENNEL AT GOODWOOD.**



John Ferneley, "The Lambton Hounds at Feeding Time," in *New Sporting Magazine* Vol. 7, No. 38 (June 1834).



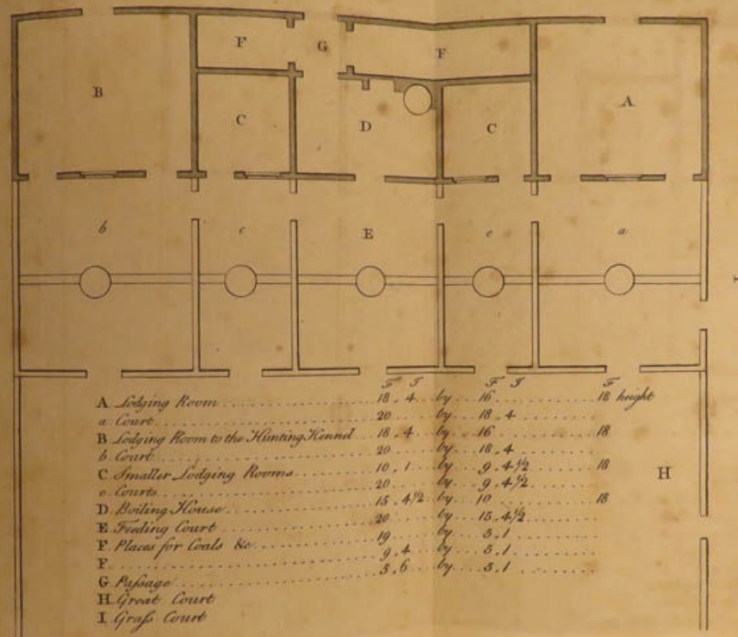
THE LAMBTON HOUNDS AT FEEDING-TIME,

To Ralph John Lambton Esq<sup>r</sup>

*This plate is respectfully inscribed by the Proprietors.*

London, 1834, for the Proprietors of the New Sporting Magazine, by R. Ackland, No. 122, Regent Street.

The Kennel at Stepleton House, Iwerne Stepleton, Dorset, c. 1769  
 Patron: Peter Beckford



A. Lodging Room	13. 4.	by	16. 5.	18 height
a. Court	20.	by	18. 4.	
B. Lodging Room to the Hunting Kennel	13. 4.	by	16. 5.	18
b. Court	20.	by	18. 4.	
C. Smaller Lodging Rooms	10. 1.	by	9. 4. 1/2	10
c. Courts	20.	by	9. 4. 1/2	
D. Boiling House	13. 4. 1/2	by	10.	18
E. Feeding Court	20.	by	15. 4. 1/2	
F. Places for Coals &c.	19.	by	5. 1.	
F.	9. 4.	by	5. 1.	
G. Passage	3. 6.	by	5. 1.	
H. Great Court				
I. Grass Court				

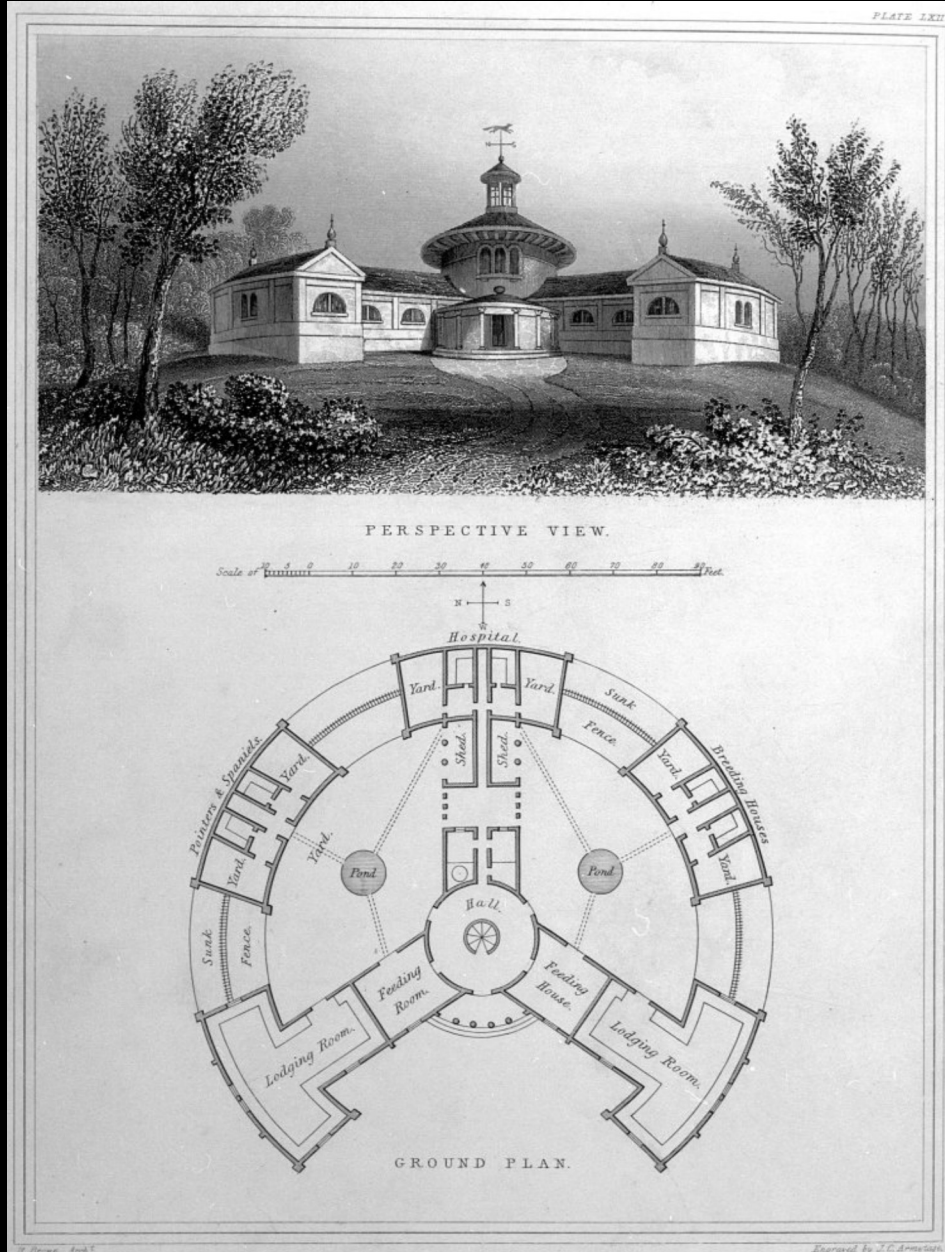
ce of his  
 uments?  
 he gen-  
 ar hum-  
 follow-

Hon.

g letters,  
 too local

now use  
 Goulard,  
 treatise,

Richard Brown, Design for a Dog Kennel, in *Domestic Architecture* (London: George Virtue, 1841)



Thomas Ingram, The Kennels, Windsor Home Park, 1860s. Showing the Queen Victoria's kennels designed by Henry Ashton in 1840.





# THE PORTABLE BUILDING CO., LTD

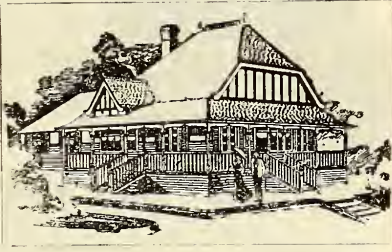
Manufacturers of  
ALL CLASSES OF WOOD AND  
IRON BUILDINGS

## FLEETWOOD.

### PORTABLE BUILDINGS FOR HOME AND ABROAD.

ARTISTIC RESIDENCES, BUNGALOWS, COTTAGES.

BILLIARD ROOMS.  
PAVILIONS.  
SHOOTING BOXES.  
CONSERVATORIES.  
DRILL HALLS. MISSION ROOMS.  
ISOLATION HOSPITALS.



*Designs and Estimates Free.*



**Stables. Coach-Houses.**

LOOSE BOXES.

**HUNT STABLES.**

HOUND KENNELS.

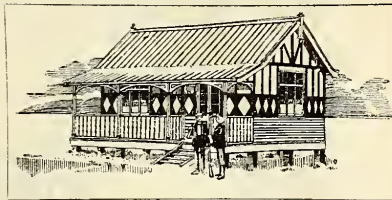
*REQUISITES for the Moor, Park,  
Garden, or Estate.*

## OFFICERS' & SERVANTS' QUARTERS.

### RAILWAY AND DOCK BUILDINGS.

**SPECIAL LIST FREE.**

Every Description of  
Building for Colonial  
Use.



## SPECIAL DESIGNS FOR ALL CLIMATES.

**BRANCHES:-**

*Manchester Chambers,*

*Finsbury Pavement House,*

**MANCHESTER.**

**LONDON.**

SOUTH AFRICA: P.O. Box 175, and 19, 20, 21, Marais Court, Commissioner  
Street, Johannesburg.

1903 Advertisement of the Portable Building Co.

The Kennel at Goodwood, Sussex, 1787  
Architect: James Wyatt  
Patron: Charles, the 3<sup>rd</sup> Duke of Richmond

**PLAN**  
OF THE  
**KENNEL AT GOODWOOD.**

